



# Virginia Healthcare Workforce Briefs

Indicators from the Bureau of Labor Statistics'  
Current Employment Statistics Survey  
**Series 2: Regional & Sectoral Employment**

Series 2, Issue 124

July 2022

## Inside this Brief:

Regional Employment	2
Regional Employment Growth	3
Subsector Employment	3
Subsector Employment Growth	4
Region Map	5
About the Data	6

*Data in this report are not seasonally adjusted. Self-employed persons, including health professionals in private practice, are not included.*

## Highlights

- ◆ Data in this series are not seasonally adjusted and exhibit short-term volatility from fluctuations in holidays, weekends, weather and other seasonal factors. Estimates for the most recent month are preliminary.
- ◆ Richmond's Health Care & Social Assistance (HC&SA) sector created 1,600 new jobs in June, a gain that represents a one-month annualized employment growth rate of 25.2%. Meanwhile, both Hampton Roads and Northern Virginia have now enjoyed five consecutive months of positive HC&SA job growth after these two regions created 600 HC&SA jobs and 500 HC&SA jobs, respectively, in June. However, the Rest of Virginia lost 200 HC&SA jobs during the month.
- ◆ Every HC&SA subsector in the state experienced positive job growth in June. Nursing & Residential Care Facilities enjoyed the largest employment gain in June with the creation of 900 new jobs, which translates into a 16.7% annualized growth rate. Ambulatory Health Care Services increased employment by 700 in June, while Hospitals added 600 new jobs during the month. Finally, Social Assistance created 300 new jobs in June.

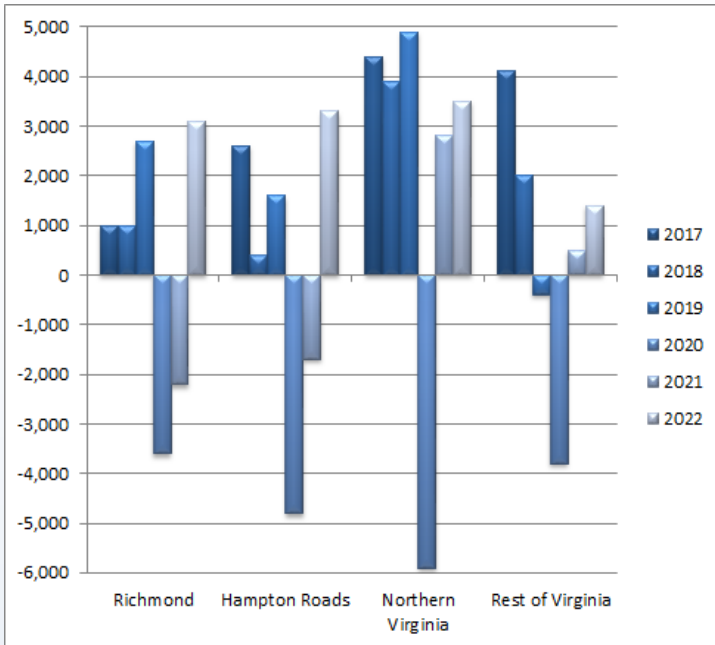
## Data in Brief

Not Seasonally Adjusted*	Employment, in Thousands				Growth Rate, Annualized		
	June 2021	Mar. 2022	May 2022	June 2022	12 Month	3 Month	1 Month
<b>Virginia</b>							
Total Nonfarm	3,949.1	4,003.4	4,052.2	4,075.9	3.2%	7.4%	7.2%
Health Care & Social Assistance	443.4	447.8	454.3	456.8	3.0%	8.3%	6.8%
<b>Hampton Roads</b>							
Total Nonfarm	774.4	769.5	780.6	785.3	1.4%	8.5%	7.5%
Health Care & Social Assistance	92.1	91.5	93.8	94.4	2.5%	13.3%	8.0%
<b>Northern Virginia</b>							
Total Nonfarm	1,498.2	1,510.5	1,523.4	1,537.9	2.6%	7.5%	12.0%
Health Care & Social Assistance	137.9	138.7	140.8	141.3	2.5%	7.7%	4.3%
<b>Richmond</b>							
Total Nonfarm	666.5	667.6	674.1	681.2	2.2%	8.4%	13.4%
Health Care & Social Assistance	84.0	83.3	84.7	86.3	2.7%	15.2%	25.2%
<b>Rest of Virginia</b>							
Total Nonfarm	1,010.0	1,055.8	1,074.1	1,071.5	6.1%	6.1%	-2.9%
Health Care & Social Assistance	129.4	134.3	135.0	134.8	4.2%	1.5%	-1.8%

Preliminary estimates are italicized

\*Seasonally adjusted data are adjusted by the Bureau of Labor Statistics to account for weather and other seasonal changes. Since the U.S. Bureau of Labor Statistics does not provide seasonally adjusted data at this level, this series uses **non**-seasonally adjusted data exclusively. Seasonal variation may account for some of the variation in time series data. When comparing data in this series to other HWDC series or other publications it is important to note whether the data reported have been seasonally adjusted.

### Regional HC&SA Employment Growth, Level



**Figure 1: Annual & YTD Change in HC&SA Regional Employment (Not Seasonally Adjusted, Full-Year Change for 2017-2021, Year-to-Date Change for 2022).**

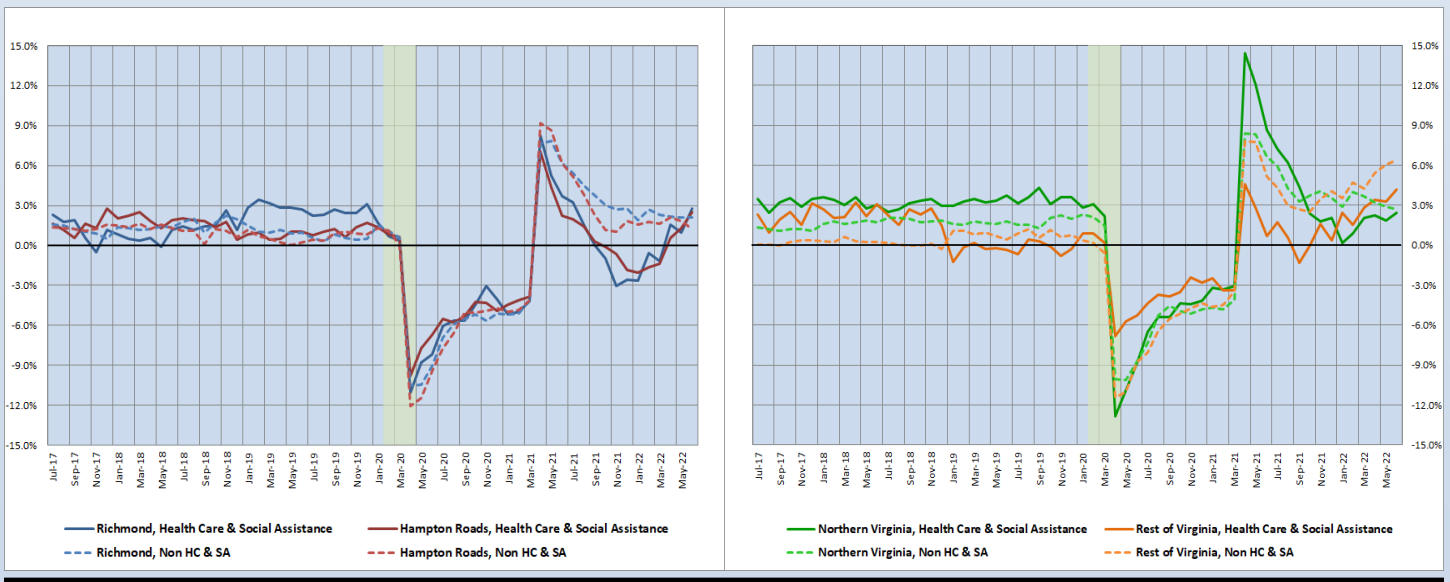
According to the preliminary data released on Friday, July 22, 2022, by the U.S. Department of Labor, Bureau of Labor Statistics, Richmond’s Health Care & Social Assistance (HC&SA) sector enjoyed very strong employment growth during the month. In June, HC&SA employment in Richmond increased by 1,600. This gain represents an impressive one-month annualized employment growth rate of 25.2%. Thanks in part to this month’s strong job gain, Richmond’s HC&SA sector has also enjoyed impressive employment growth over the past three months. In Q2 2022, Richmond’s HC&SA sector created 3,000 jobs, which translates into a 15.2% annualized employment growth rate.

Hampton Roads and Northern Virginia also enjoyed strong job growth in June. Hampton Roads created 600 new HC&SA jobs, while Northern Virginia increased HC&SA employment by 500. With these gains, both of these regions have now increased employment in each of the past five months. On the other hand, the Rest of Virginia saw HC&SA employment fall by 200 during the month.

### Year-Over-Year Regional Employment Growth

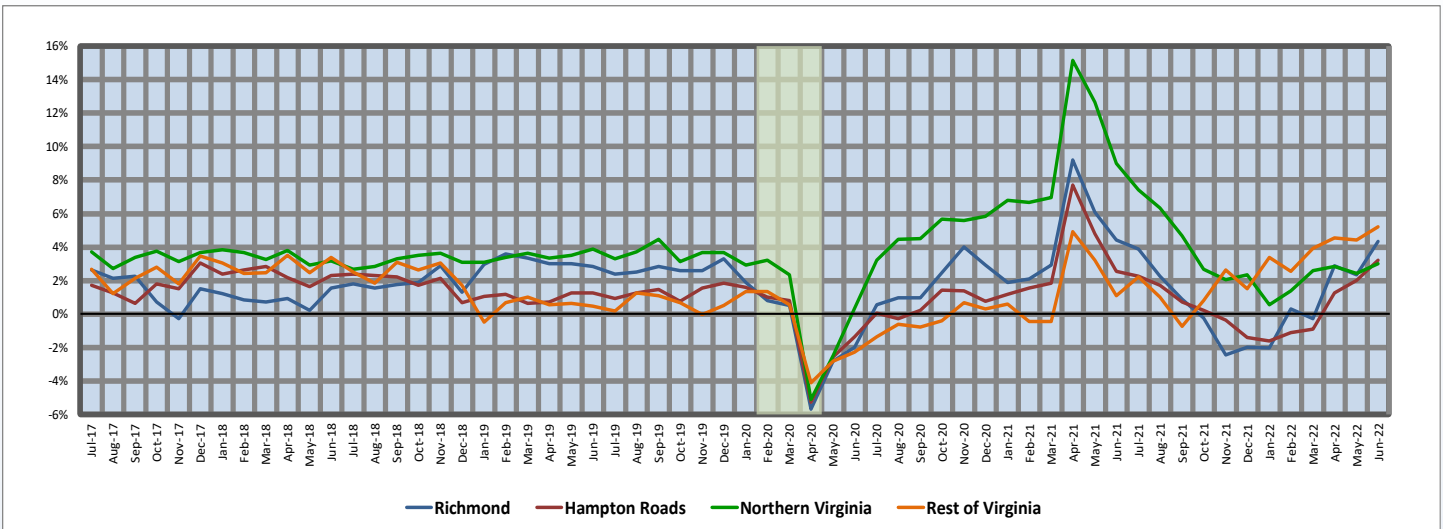
Richmond’s year-over-year HC&SA employment growth rate nearly tripled in June from 0.95% to 2.74%. With this increase, Richmond’s HC&SA sector saw its year-over-year employment growth rate reach its highest value since July 2021. At the same time, Hampton Roads saw its year-over-year HC&SA employment growth rate nearly double from 1.30% to 2.50% during the month. Northern Virginia’s year-over-year HC&SA employment growth rate increased as well in June from 1.88% to 2.47%. Finally, the Rest of Virginia maintained its position as the fastest-growing region in the state in terms of year-over-year HC&SA employment growth as its growth rate increased from 3.29% to 4.17% in June.

**Figure 2: Year-Over-Year Employment Growth (Not Seasonally Adjusted).**



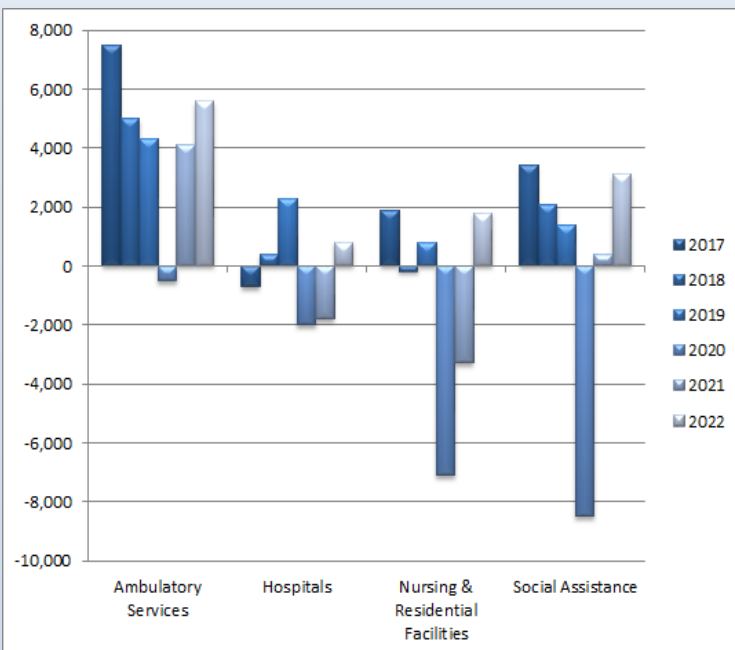
## 12-Month Average Employment Growth by Region

**Figure 3: 12-Month Moving Average, HC&SA Regional Employment Growth Rate (Not Seasonally Adjusted).**



Throughout the first half of 2022, all four regions in Virginia have seen their respective 12-month HC&SA employment growth rate moving averages trend upwards, and this pattern continued in June with increases across the entire state. Richmond’s HC&SA sector enjoyed the largest increase during the month. In June, Richmond’s HC&SA sector saw its 12-month employment growth rate moving average nearly double from 2.34% to 4.32%. Hampton Roads also experienced a significant increase to its own 12-month HC&SA employment growth rate moving average, which rose from 2.02% to 3.21% in June. Northern Virginia experienced a somewhat smaller increase to its 12-month HC&SA employment growth rate moving average from 2.43% to 3.01%, while the comparable moving average for the Rest of Virginia rose from 4.41% to 5.21%.

## Subsector Employment Growth



**Figure 4: Annual & YTD Change in HC&SA Subsector Employment (Not Seasonally Adjusted, Full-Year Change for 2017-2021, Year-to-Date Change for 2022).**

All four HC&SA subsectors in Virginia enjoyed positive employment growth in June. Nursing & Residential Care Facilities experienced the largest employment gain during the month. In June, this HC&SA subsector created 900 new jobs. With this gain, Nursing & Residential Care Facilities have increased employment in each of the past three months. In total, Nursing & Residential Care Facilities created 2,300 jobs in Q2 2022. Hospitals have also enjoyed three consecutive months of positive employment growth. With the creation of 600 new jobs in June, this HC&SA subsector has increased employment by 1,200 in Q2 2022.

Ambulatory Health Care Services enjoyed an even larger employment gain in Q2 2022. This HC&SA subsector increased employment by 700 in June. Thanks to this month’s gain and a particularly impressive increase in April, Ambulatory Health Care Services created a total of 6,400 jobs in Q2 2022. As for Social Assistance, this HC&SA subsector increased employment by 300 during the month.

### Distribution of Growth by Subsector

Not Seasonally Adjusted	Employment, in Thousands				Growth Rate, Annualized		
	June 2021	Mar. 2022	May 2022	June 2022	12 Month	3 Month	1 Month
<b>Virginia</b>							
Health Care & Social Assistance	443.4	447.8	454.3	456.8	3.0%	8.3%	6.8%
<i>Ambulatory Health Care Services</i>	195.2	195.8	201.5	202.2	3.6%	13.7%	4.2%
<i>Hospitals</i>	105.6	104.2	104.8	105.4	-0.2%	4.7%	7.1%
<i>Nursing &amp; Residential Care Facilities</i>	68.5	67.9	69.3	70.2	2.5%	14.3%	16.7%
<i>Social Assistance</i>	74.1	79.9	78.7	79.0	6.6%	-4.4%	4.7%
<b>Hampton Roads</b>							
Health Care & Social Assistance	92.1	91.5	93.8	94.4	2.5%	13.3%	8.0%
<i>Hospitals</i>	21.7	21.6	21.8	21.9	0.9%	5.7%	5.6%
<b>Northern Virginia</b>							
Health Care & Social Assistance	137.9	138.7	140.8	141.3	2.5%	7.7%	4.3%
<i>Ambulatory Health Care Services</i>	71.1	71.1	74.4	74.8	5.2%	22.5%	6.6%
<i>Hospitals</i>	26.0	26.0	26.2	26.3	1.2%	4.7%	4.7%

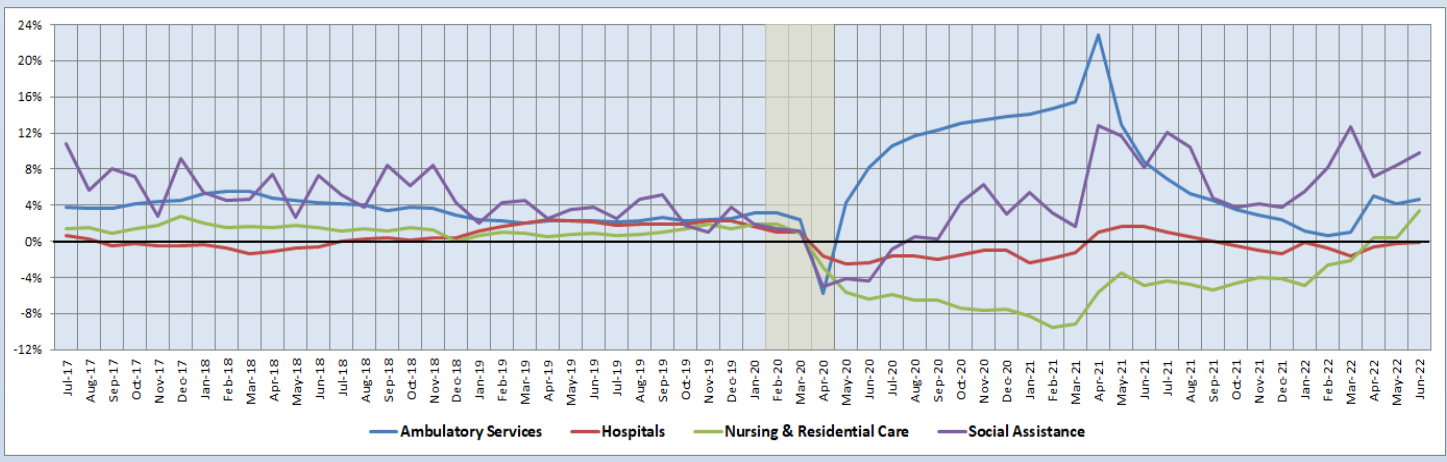
Preliminary estimates are italicized

Nursing & Residential Care Facilities increased employment at a 16.7% annualized rate in June. This growth rate is more than double the comparable 6.8% average for Virginia’s HC&SA sector as a whole during the month. This HC&SA subsector has enjoyed very fast employment growth over the past three months as well. In Q 2022, employment in Nursing & Residential Care Facilities increased at a 14.3% annualized rate. At the same time, employment in Ambulatory Health Care Services increased at a 13.7% annualized rate over the past three months. Meanwhile, Social Assistance continues to enjoy the fastest long-term employment growth in the state thanks to its 12-month employment growth rate of 6.6%.

### 12-Month Average Employment Growth by Subsector

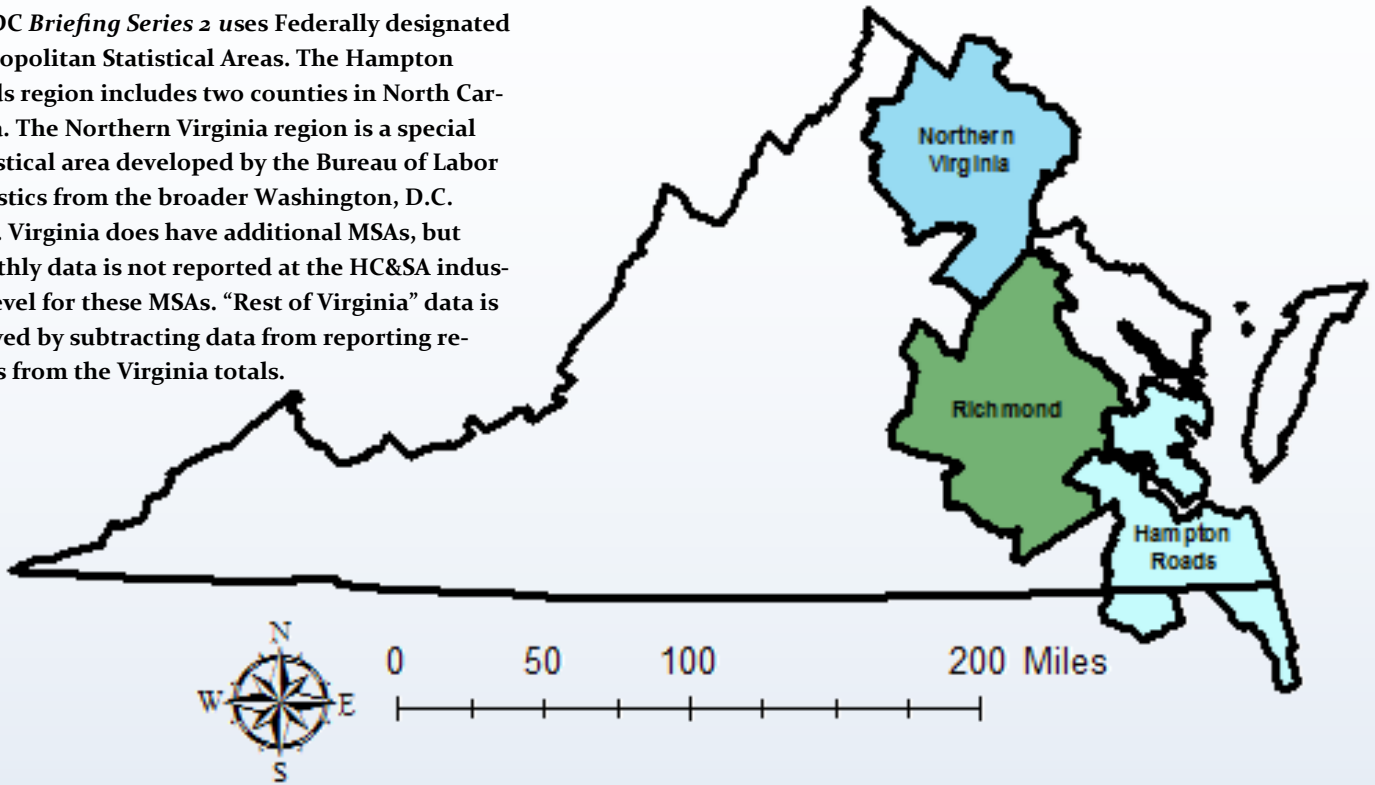
In June, Nursing & Residential Care Facilities experienced a dramatic increase to its 12-month employment growth rate moving average, which rose from 0.35% to 3.43% during the month. This represents the highest 12-month employment growth rate moving average for Nursing & Residential Care Facilities in eight years. Social Assistance saw its 12-month employment growth rate moving average increase from 8.47% to 9.86% in June, while the comparable moving average for Ambulatory Health Care Services grew from 4.11% to 4.66% during the month. As for Hospitals, this HC&SA subsector experienced a slight increase to its 12-month employment growth rate moving average from -0.19% to -0.09%.

**Figure 5: 12-Month Moving Average, HC&SA Subsector Employment Growth Rate (Not Seasonally Adjusted).**



### Region Map

HWDC *Briefing Series 2* uses Federally designated Metropolitan Statistical Areas. The Hampton Roads region includes two counties in North Carolina. The Northern Virginia region is a special statistical area developed by the Bureau of Labor Statistics from the broader Washington, D.C. MSA. Virginia does have additional MSAs, but monthly data is not reported at the HC&SA industry level for these MSAs. “Rest of Virginia” data is derived by subtracting data from reporting regions from the Virginia totals.



### Region Detail

Northern Virginia		Richmond		Hampton Roads	
<i>Northern VA, (Non-standard CES Area 94783)</i>		<i>Richmond, VA (MSA 40060)</i>		<i>Virginia Beach-Norfolk-Newport News, VA-NC (MSA 47260)</i>	
<b>Counties:</b>	<b>Cities:</b>	<b>Counties:</b>	<b>Cities:</b>	<b>Counties:</b>	<b>Cities:</b>
Arlington	Alexandria	Amelia	Colonial Heights	Gloucester	Chesapeake
Clarke	Fairfax	Caroline	Hopewell	Isle of Wight	Hampton
Culpeper	Falls Church	Charles City	Petersburg	James City	Newport News
Fairfax	Fredericksburg	Chesterfield	Richmond	Mathews	Norfolk
Fauquier	Manassas	Dinwiddie		Surry	Poquoson
Loudoun	Manassas Park	Goochland		York	Portsmouth
Prince William		Hanover			Suffolk
Rappahannock		Henrico		<i>Currituck, NC</i>	Virginia Beach
Spotsylvania		King William		<i>Gates, NC</i>	Williamsburg
Stafford		New Kent			
Warren		Powhatan			
		Prince George			
		Sussex			



Healthcare Workforce  
Data Center

Perimeter Center  
9960 Mayland Drive, Suite 300  
Henrico, VA 23233-1463

Phone: (804) 597-4213  
Fax: (804) 527-4434  
E-mail: [hwdc@dhp.virginia.gov](mailto:hwdc@dhp.virginia.gov)  
Website: [www.dhp.virginia.gov/PublicResources/HealthcareWorkforceDataCenter](http://www.dhp.virginia.gov/PublicResources/HealthcareWorkforceDataCenter)

*HWDC Staff:*

Yetty Shobo, PhD  
*Director*

Rajana Siva, MBA  
*Data Analyst*

Christopher Coyle  
*Research Assistant*

The Department of Health Professions Healthcare Workforce Data Center works to improve the data collection and measurement of Virginia's healthcare workforce through regular assessment of workforce supply and demand issues among the 80 professions and 350,000 practitioners licensed in Virginia by DHP.

The HWDC collects data on Virginia's licensed health professionals through surveys completed during the online license renewal and application process. Survey results and data may be accessed on our website: [www.dhp.virginia.gov/PublicResources/HealthcareWorkforceDataCenter/](http://www.dhp.virginia.gov/PublicResources/HealthcareWorkforceDataCenter/).

The HWDC also provides a series of Virginia Healthcare Workforce Briefs based data collected by the U.S. Department of Labor's Bureau of Labor Statistics and the U.S. Department of Commerce' Bureau of Economic Analysis.

Virginia Healthcare Workforce Briefs:

Series 1: State & National Employment (Monthly)

Series 2: Virginia Regional Employment (Monthly)

Series 3: Income & Compensation (Quarterly)

Follow us on. . .

Tumblr: <http://vahwdc.tumblr.com/>

### About the Data

Data in this report are from the U.S. Department of Labor Bureau of Labor Statistics' Current Employment Statistics program. The CES program surveys about 143,000 businesses and government agencies monthly. Unless otherwise noted, this series uses data that are not seasonally adjusted. Seasonal variations related to weather, holidays, weekends, seasons and other predictable variations are apparent in the data. Short-term changes may be related to seasonal changes rather than underlying trends. Data from recent months is preliminary and subject to revision in future releases from the CES. Revisions will be reported in future editions of this series. Unless otherwise noted, the CES data presented in this series:

#### **Includes:**

- ◆ Data on employed individuals drawing a paycheck (payroll employees).
- ◆ All employees, regardless of role, occupation or hours worked.
- ◆ HC&SA employees in the private sector only.
- ◆ Persons employed by health professionals in private practice.
- ◆ Both government and private sector workers in nonfarm employment data.

#### **Does not include:**

- ◆ Self-employed workers or volunteers, including health professionals in private practice.
- ◆ HC&SA employees in the public sector. (These are counted as government workers in monthly reports).
- ◆ Information on hours worked or the quality of employment.
- ◆ Government workers in HC&SA level data. (Government workers, regardless of occupation and role, are classified as public sector employees).